

FOR ON-LOAD TAP CHANGING CHAMBER *Series Model LF*

KATO ELECTRIC MFG. CO., LTD. pioneered Technology for continuous filtration of insulating Oils in On-Load Tap Changing Chamber of Power Transformer under the hot line condition keeping Its ideal dielectric strength breakdown and less Moisture content all the time.

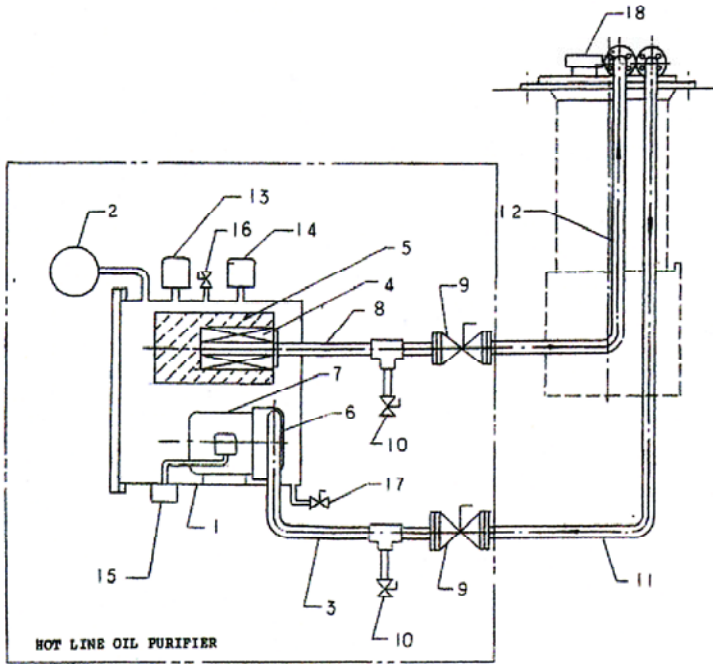
KATO LF Series Hot Line Oil Filter is the improved Version of original KRF/KF series. This is the first And unique design of to offer four (4) improvements Such as SAVE SPACE/SAVE ENERGY/NO ENVIRONMENTAL HAZZARD/SAFETY OPERATION. Unique design for Model LF 10/20 series houses Oil Pump and Filter Cartridge in one single Filter Tank which make it Possible to reduce maintenance work hour drastically. Filter Cartridge is of compact type with extra long life And genuine quality (tested and confirmed by Laser Diode Beam Particle Counter) to meet today's requirements of Influence of Particles in Liquid Insulation as well as Good Dielectric Breakdown Voltage etc.

Features:

- * Compact size and remarkable light weight suitable for immediate installation to new or existing On-Load Tap Changing Chamber.
- * Hermetically sealed Oil Pump and Filter Tank construction with No-Oil Spill or Leakage outside even after the end of Oil Seal's life.
- * Horizontal Filter Tank for easy Filter Cartridge replacement compared with competitor's Vertical Tank which can not avoid any oil spill at when used Cartridge is being lifted upwards.
- * Filter Cartridge combined with Absorbent "SEKADO" providing a large surface area and dirt holding capacity for quite long service life.
- * Operation is selectable for daily Time Switch run or at each tap Changing signal run.

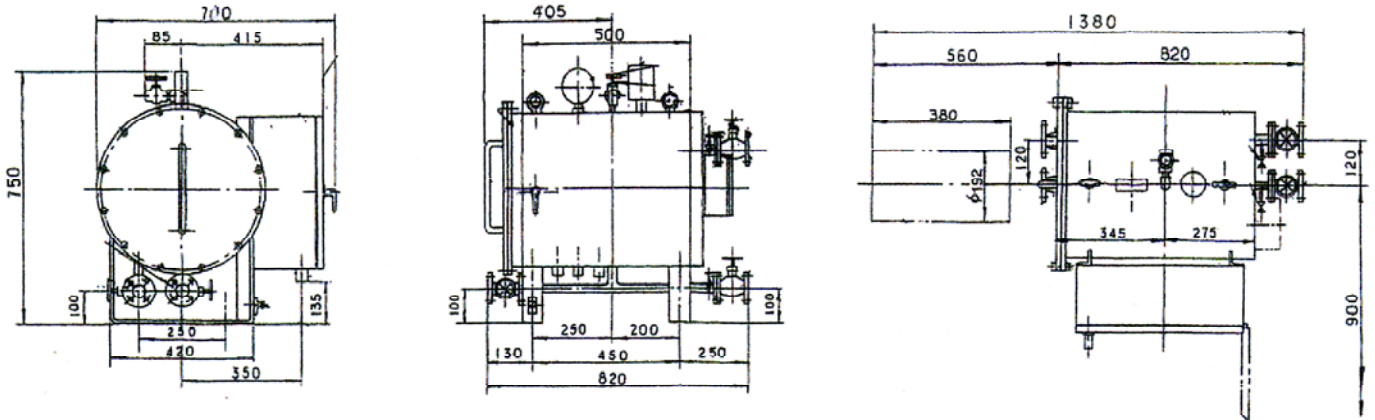


CONNECTION DIAGRAM



NO	NOMENCLATURE
1	PRESSURE TANK
2	PRESSURE GAUGE
3	RETURN
4	FILTER ELEMENT
5	ABSORBENT
6	PUMP
7	MOTOR
8	FEED
9	STOP VALVE
10	SAMPLING VALVE
11	RETURN PIPE
12	FEED PIPE
13	TEMPERATURE SWITCH
14	PRESSURE SWITCH
15	JUNCTION BOX
16	AIR VENT PLUG
17	DRAIN PLUG
18	TAP CHANGER HEAD

OUT-LINE DRAWING



SPECIFICATIONS

Model	CAPACITY L/M	MOTOR KW	CONNECTIONS		DIMENSIONS (mm)			WEIGHT Kg
			IN/OUT	ELECTRIC	L	W	H	
LF-10	10	0.4	3/4"	1"	820	700	750	120
LF-20	20	0.4	3/4"	1"	820	700	750	120

AGENT

KATO ELECTRIC MFG. CO., LTD.
 203, 17-19, EBARA 2-CHOME, SHINAGAWA-KU
 TOKYO, JAPAN TEL: 81-3-3783-5761
 FAX: 81-3-3784-6309
 URL: <http://www.katofl.com>